

Hours of Internet use

		Frequency	Percent	Valid Percent	Cumulative Percent
Valid	0.916666666666667	1	.1	.2	4.5
	1	15	1.5	2.4	7.0
	1.0166666666666666	2	.2	.3	7.3
	1.0333333333333334	1	.1	.2	7.5
	1.0833333333333333	1	.1	.2	7.6
	1.1666666666666667	6	.6	1.0	8.6
	1.25	4	.4	.6	9.2
	1.3333333333333333	1	.1	.2	9.4
	1.4166666666666667	1	.1	.2	9.6
	1.5	15	1.5	2.4	12.0
	1.75	1	.1	.2	12.2
	2	23	2.3	3.7	15.9
	2.0166666666666666	2	.2	.3	16.2
	2.1666666666666665	3	.3	.5	16.7
	2.25	2	.2	.3	17.0
	2.3333333333333335	1	.1	.2	17.2
	2.5	9	.9	1.5	18.6
	2.6666666666666667	1	.1	.2	18.8
	2.75	2	.2	.3	19.1
	3	38	3.9	6.2	25.3
	3.1666666666666665	2	.2	.3	25.6
	3.5	7	.7	1.1	26.7
	3.75	2	.2	.3	27.1
	4	34	3.5	5.5	32.6
	4.0166666666666667	1	.1	.2	32.7
	4.25	1	.1	.2	32.9
	4.3333333333333333	1	.1	.2	33.1
	4.5	3	.3	.5	33.5
	4.75	1	.1	.2	33.7
	5	37	3.8	6.0	39.7
	5.1166666666666666	1	.1	.2	39.9
	5.25	2	.2	.3	40.2
	5.5	4	.4	.6	40.8
	5.6666666666666666	1	.1	.2	41.0
	6	30	3.0	4.9	45.9
	6.1666666666666667	1	.1	.2	46.0
	6.5	1	.1	.2	46.2
	7	25	2.5	4.1	50.2
	7.5	1	.1	.2	50.4
	8	26	2.6	4.2	54.6
	8.083333333333334	1	.1	.2	54.8
	8.166666666666666	1	.1	.2	54.9

Hours of Internet use

		Frequency	Percent	Valid Percent	Cumulative Percent
Valid	8.5	1	.1	.2	55.1
	9	15	1.5	2.4	57.5
	9.033333333333333	1	.1	.2	57.7
	10	23	2.3	3.7	61.4
	10.083333333333334	1	.1	.2	61.6
	10.2	1	.1	.2	61.8
	10.25	1	.1	.2	61.9
	10.333333333333334	1	.1	.2	62.1
	10.5	3	.3	.5	62.6
	11	17	1.7	2.8	65.3
	12	19	1.9	3.1	68.4
	13	12	1.2	1.9	70.3
	14	11	1.1	1.8	72.1
	14.5	1	.1	.2	72.3
	15	16	1.6	2.6	74.9
	15.5	3	.3	.5	75.4
	16	8	.8	1.3	76.7
	16.5	1	.1	.2	76.8
	16.833333333333336	1	.1	.2	77.0
	17	10	1.0	1.6	78.6
	18	5	.5	.8	79.4
	19	3	.3	.5	79.9
	20	10	1.0	1.6	81.5
	20.5	1	.1	.2	81.7
	21	6	.6	1.0	82.7
	22	6	.6	1.0	83.6
	23	3	.3	.5	84.1
	24	3	.3	.5	84.6
	25	11	1.1	1.8	86.4
	26	3	.3	.5	86.9
	27	2	.2	.3	87.2
	28	4	.4	.6	87.8
	30	9	.9	1.5	89.3
	31	4	.4	.6	90.0
	32	2	.2	.3	90.3
	33	2	.2	.3	90.6
	34	1	.1	.2	90.8
	35	7	.7	1.1	91.9
	36	1	.1	.2	92.1
	38	1	.1	.2	92.2
	40	10	1.0	1.6	93.8
	41	2	.2	.3	94.2

Hours of Internet use

		Frequency	Percent	Valid Percent	Cumulative Percent	
Valid	42	1	.1	.2	94.3	
	43	2	.2	.3	94.7	
	45	3	.3	.5	95.1	
	48	2	.2	.3	95.5	
	49	2	.2	.3	95.8	
	50	6	.6	1.0	96.8	
	53	1	.1	.2	96.9	
	54	1	.1	.2	97.1	
	55	3	.3	.5	97.6	
	56	3	.3	.5	98.1	
	60	2	.2	.3	98.4	
	65.25	1	.1	.2	98.5	
	70	3	.3	.5	99.0	
	75	1	.1	.2	99.2	
	84	1	.1	.2	99.4	
	90	2	.2	.3	99.7	
	96	1	.1	.2	99.8	
	118	1	.1	.2	100.0	
	Total		617	62.7	100.0	
	Missing	-9.00 Time unknown	106	10.8		
-3.00 Internet use unknown		6	.6			
-1.00 Not internet user		255	25.9			
Total		367	37.3			
Total		984	100.0			

Dot Plot of hours of internet usage

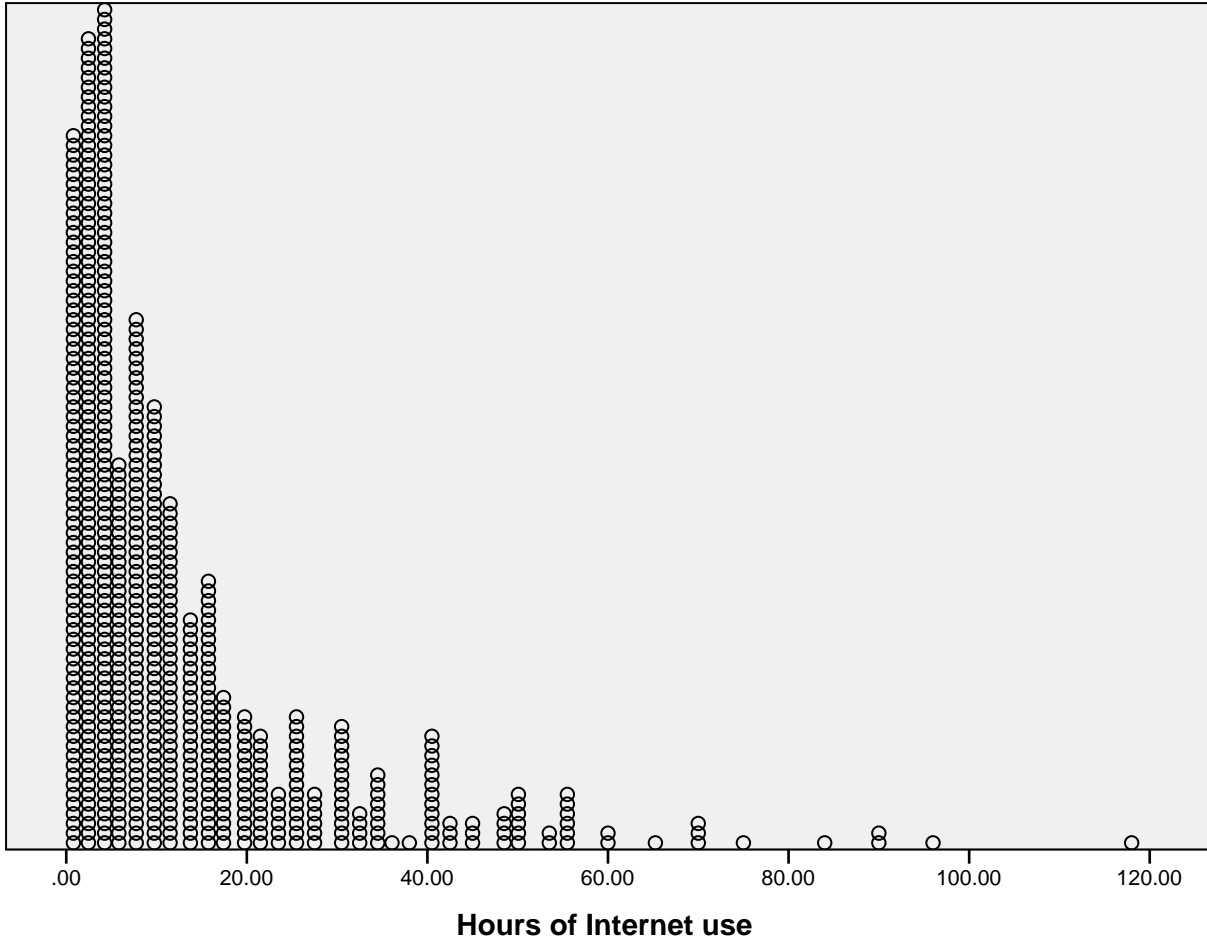
Notes

Output Created	02-Feb-2009 14:21:48
Comments	
Input Data	C:\DATA SPSS\gssnet.sav
Active Dataset	DataSet1
Filter	<none>
Weight	<none>
Split File	<none>
N of Rows in Working Data File	984

Notes

Syntax	XGRAPH CHART=[POINT] BY nethrs [s] /DISPLAY DOT=ASYMMETRIC.		
Resources	Processor Time		00:00:00.187
	Elapsed Time		00:00:00.210

[DataSet1] C:\DATA SPSS\gssnet.sav



Histogram

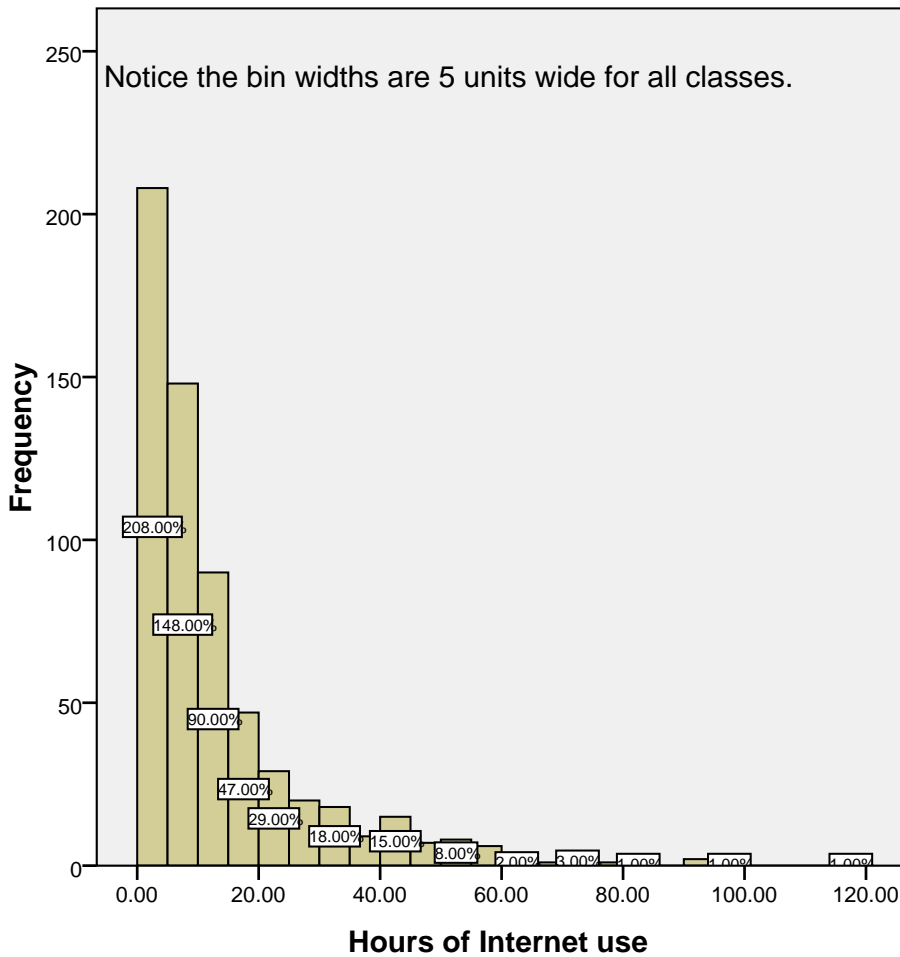
Notes

Output Created	02-Feb-2009 16:32:51
Comments	

Notes

Input	Data	C:\DATA SPSS\gssnet.sav
	Active Dataset	DataSet2
	Filter	<none>
	Weight	<none>
	Split File	<none>
	N of Rows in Working Data File	984
Syntax		GRAPH /HISTOGRAM=nethrs.
Resources	Processor Time	00:00:00.406
	Elapsed Time	00:00:00.401

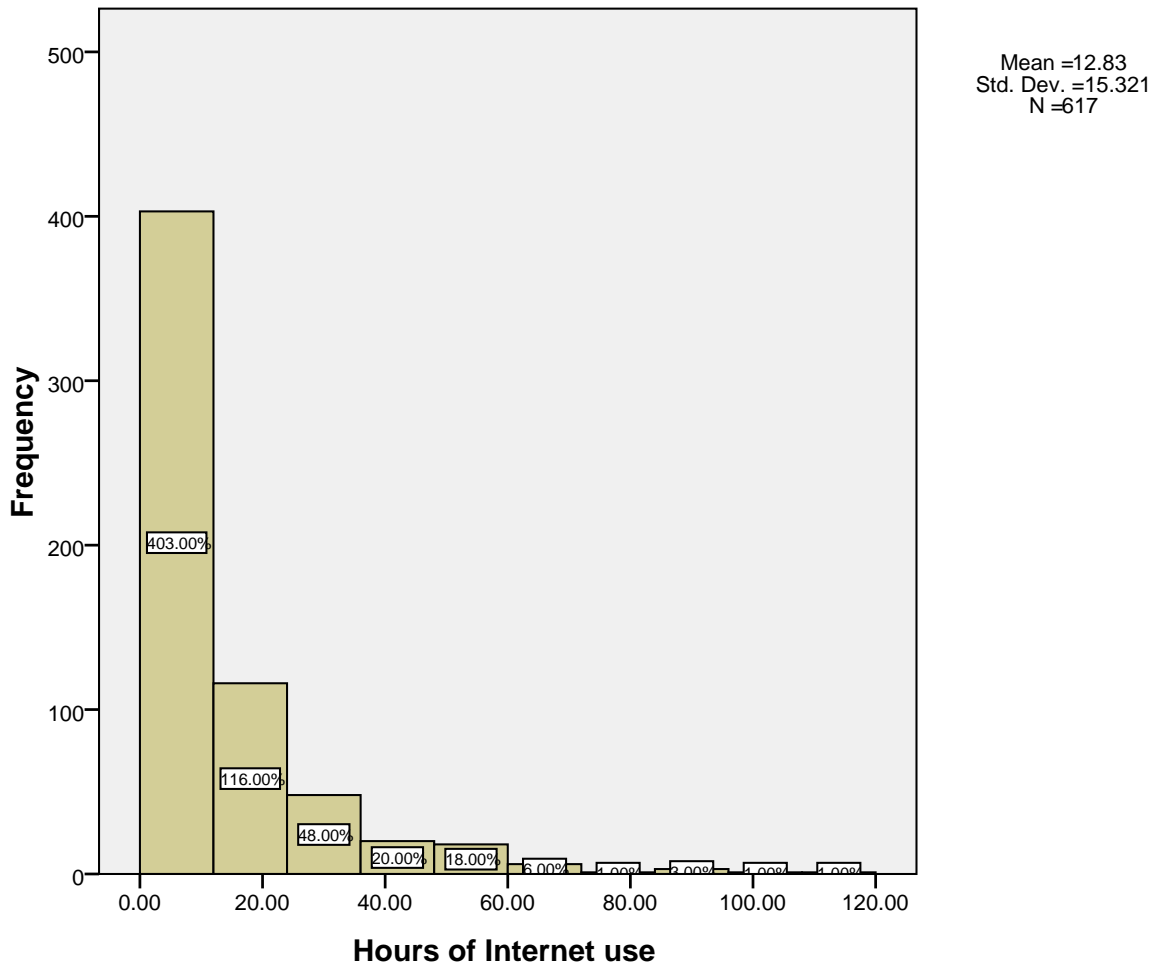
Histogram of hours on internet.



Mean =12.83
Std. Dev. =15.321
N =617

Histogram with 10 classes.

Still have the same shape to the distribution, but not as much detail about the data is seen.



Notes

Output Created	02-Feb-2009 16:44:54
Comments	
Input Data	C:\DATA SPSS\gssnet.sav
Active Dataset	DataSet2
Filter	<none>
Weight	<none>

Notes

Input	Split File	<none>
	N of Rows in Working Data File	984
Syntax		GRAPH /HISTOGRAM=nethrs.
Resources	Processor Time	00:00:00.266
	Elapsed Time	00:00:00.267