

## Frequency Table

### Notes

Output Created	03-Feb-2009 10:20:33	
Comments		
Input	Data	C:\DATA SPSS\bodyfat.sav
	Active Dataset	DataSet1
	Filter	<none>
	Weight	<none>
	Split File	<none>
	N of Rows in Working Data File	252
Missing Value Handling	Definition of Missing	User-defined missing values are treated as missing.
	Cases Used	Statistics are based on all cases with valid data.
Syntax	FREQUENCIES VARIABLES=height weight /STATISTICS=STDDEV VARIANCE RANGE MEAN SKEWNESS SESKEW /ORDER=ANALYSIS.	
Resources	Processor Time	00:00:00.000
	Elapsed Time	00:00:00.004

Height and Weight of subjects

### Statistics

		Height in inches	Weight in pounds
N	Valid	252	252
	Missing	0	0
	Mean	70.3075	178.9244
	Std. Deviation	2.60958	29.38916
	Variance	6.810	863.723
	Skewness	.103	1.205
	Std. Error of Skewness	.153	.153
	Range	13.75	244.65

## Graph

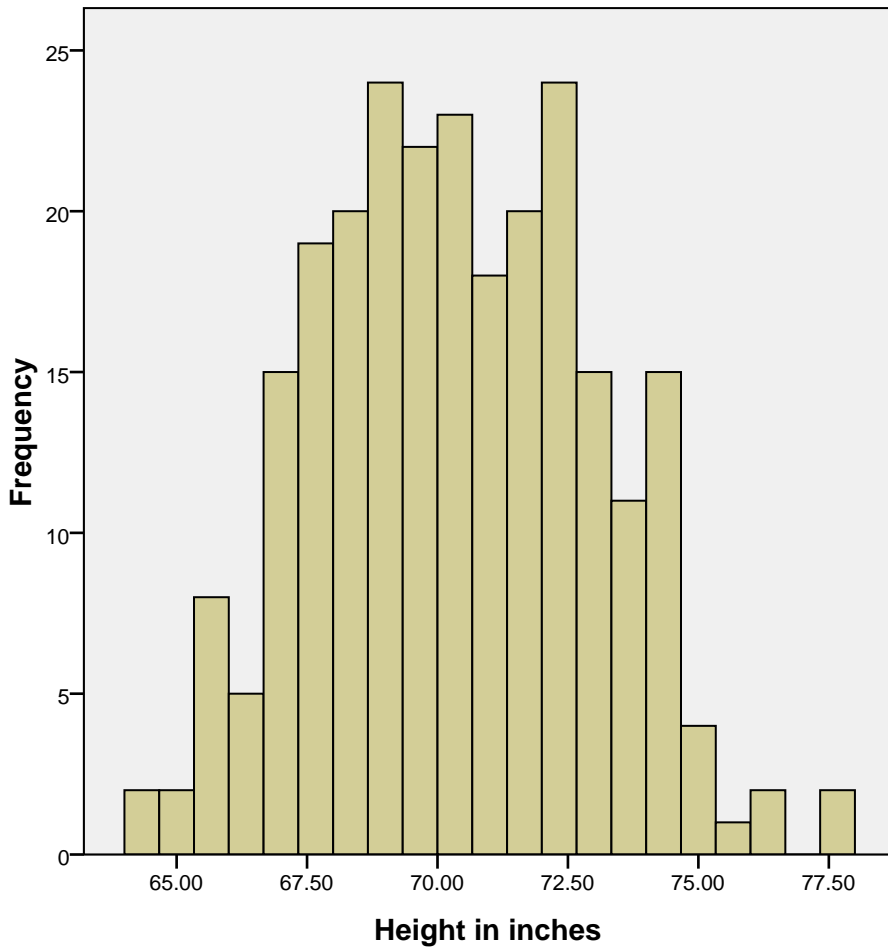
### Notes

Output Created	03-Feb-2009 10:22:09
----------------	----------------------

**Notes**

Comments		
Input	Data	C:\DATA SPSS\bodyfat.sav
	Active Dataset	DataSet1
	Filter	<none>
	Weight	<none>
	Split File	<none>
	N of Rows in Working Data File	252
Syntax	GRAPH /HISTOGRAM=height.	
Resources	Processor Time	00:00:00.265
	Elapsed Time	00:00:00.261

Graph of Height is more dense about mean.



## Graph

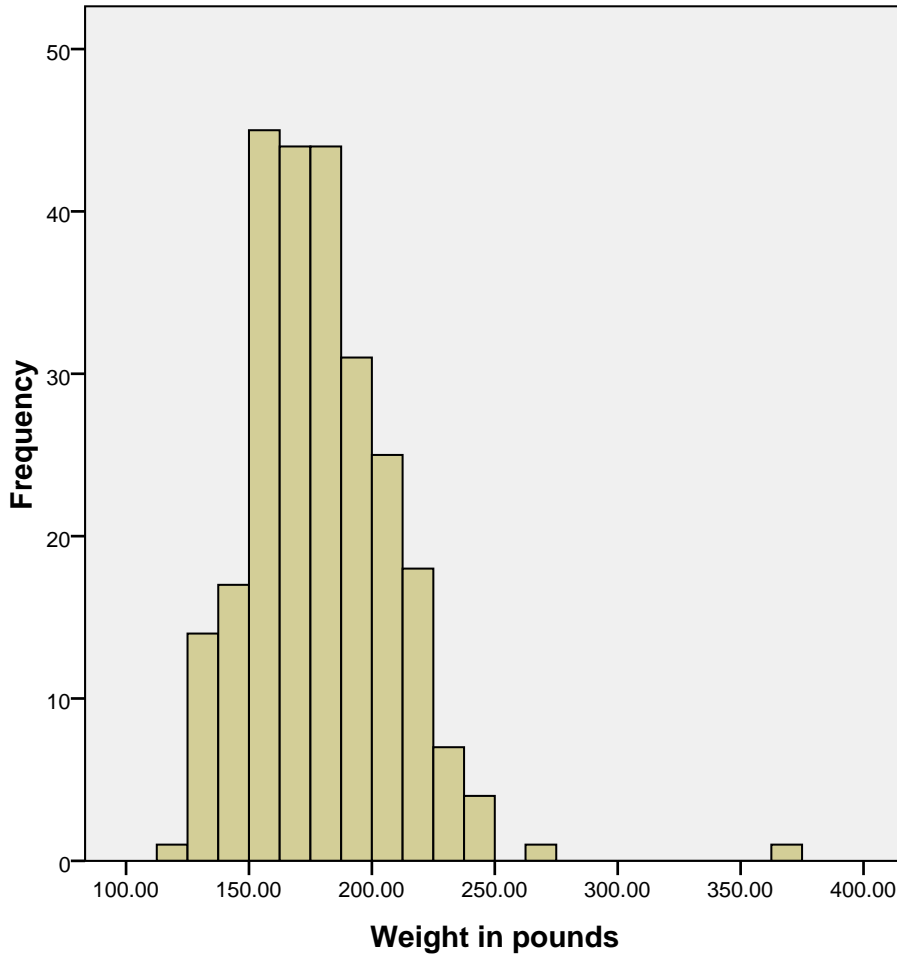
### Notes

Output Created	03-Feb-2009 10:23:04
Comments	
Input Data	C:\DATA SPSS\bodyfat.sav
Active Dataset	DataSet1
Filter	<none>
Weight	<none>
Split File	<none>
N of Rows in Working Data File	252
Syntax	GRAPH /HISTOGRAM=weight.

### Notes

Resources	Processor Time	00:00:00.265
	Elapsed Time	00:00:00.262

Graph of weight is more variable and skewed to the right.



Mean =178.92  
Std. Dev. =29.389  
N =252